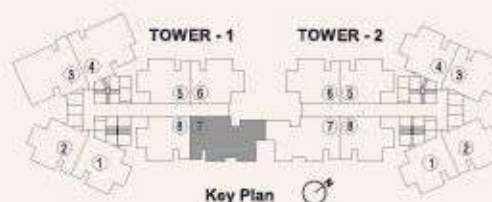


3 BHK - 1019 SQ.FT.*



RERA CARPET AREA	ADDITIONAL AREA	TOTAL AREA
SQ.FT	SQ.FT	SQ.FT
955	64	1019



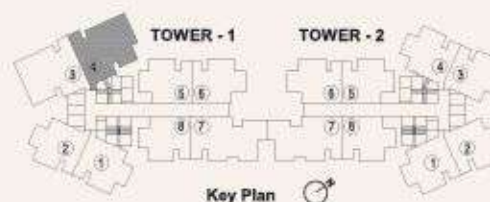
Chandak Treesourous MahaRERA Project Registration No. PS1800048658 Available on <https://maharera.mahaonline.gov.in>

Note - The floor plan layout is in respect of 2nd to 45th habitable floors. The furniture, fixtures, interior work, design options and fittings as displayed in this communication are artistic impressions used for indicative purposes only and not part of the standard offerings to be provided in the premises. The areas and dimensions shown, if any, are as per the plans approved by the concerned authority and the same are subject to construction exigencies and variations. Intending purchasers are requested to verify all the details before acting in any manner with respect to the project. Project financed by ICICI Bank Limited.





3 BHK - 1029 SQ.FT.*



RERA CARPET AREA	ADDITIONAL AREA	TOTAL AREA
SQ.FT	SQ.FT	SQ.FT
966	63	1029



Plan Not To Scale

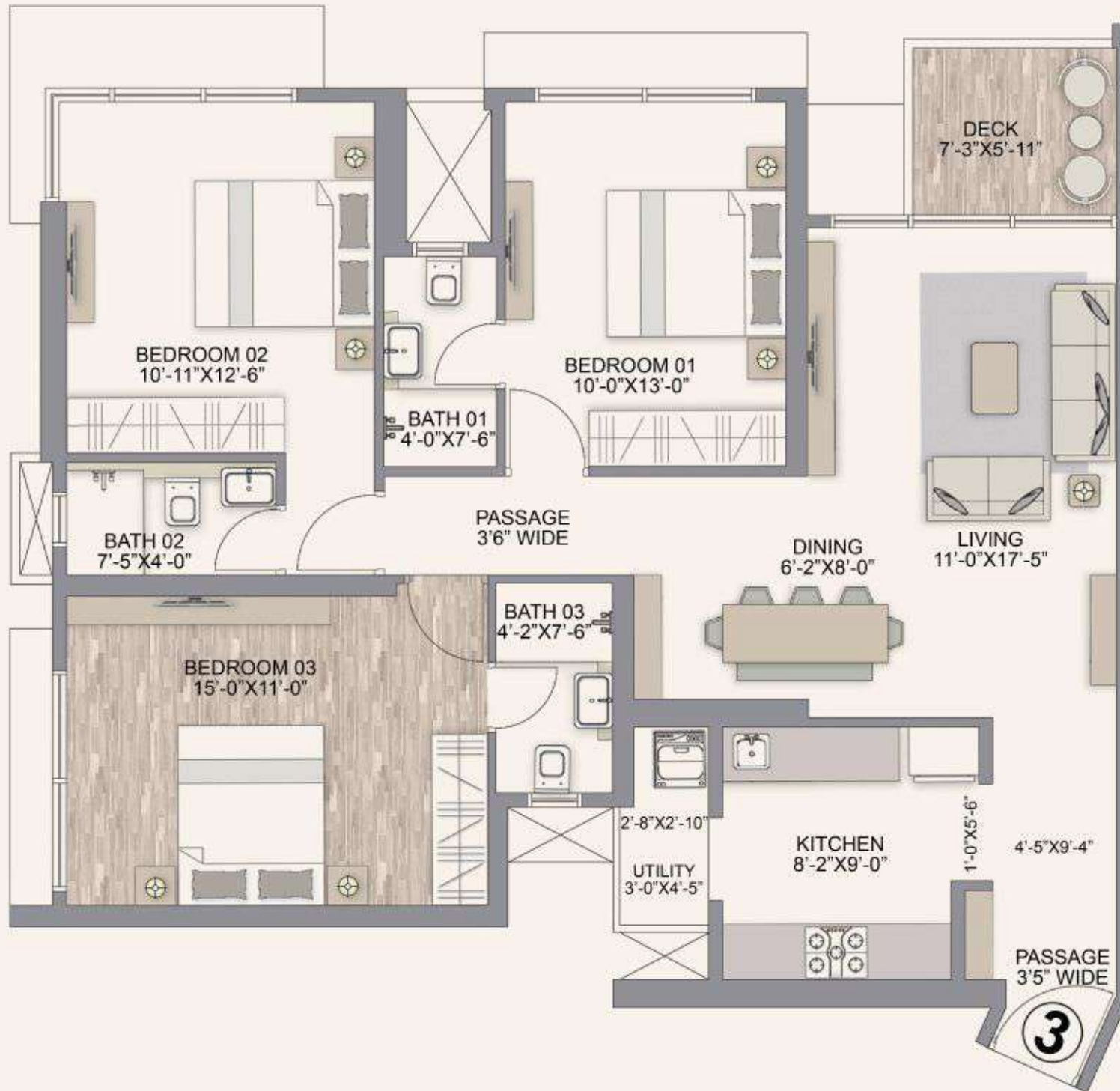
Chandak Treesourous MahaRERA Project Registration No. PS1800048658 Available on <https://maharera.mahaonline.gov.in>

Note - The floor plan layout is in respect of 2nd to 45th habitable floors. The furniture, fixtures, interior work, design options and fittings as displayed in this communication are artistic impressions used for indicative purposes only and not part of the standard offerings to be provided in the premises. The areas and dimensions shown, if any, are as per the plans approved by the concerned authority and the same are subject to construction exigencies and variations. Intending purchasers are requested to verify all the details before acting in any manner with respect to the project. Project financed by ICICI Bank Limited.



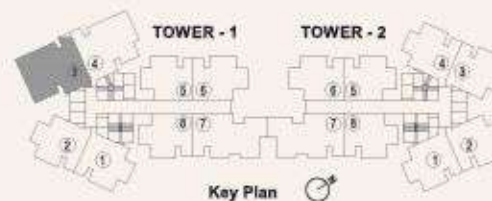
MAHARERA QR CODE

*T&C Applied



*T&C Applied

3 BHK - 1068 SQ.FT.*



RERA CARPET AREA	ADDITIONAL AREA	TOTAL AREA
SQ.FT	SQ.FT	SQ.FT
1005	63	1068



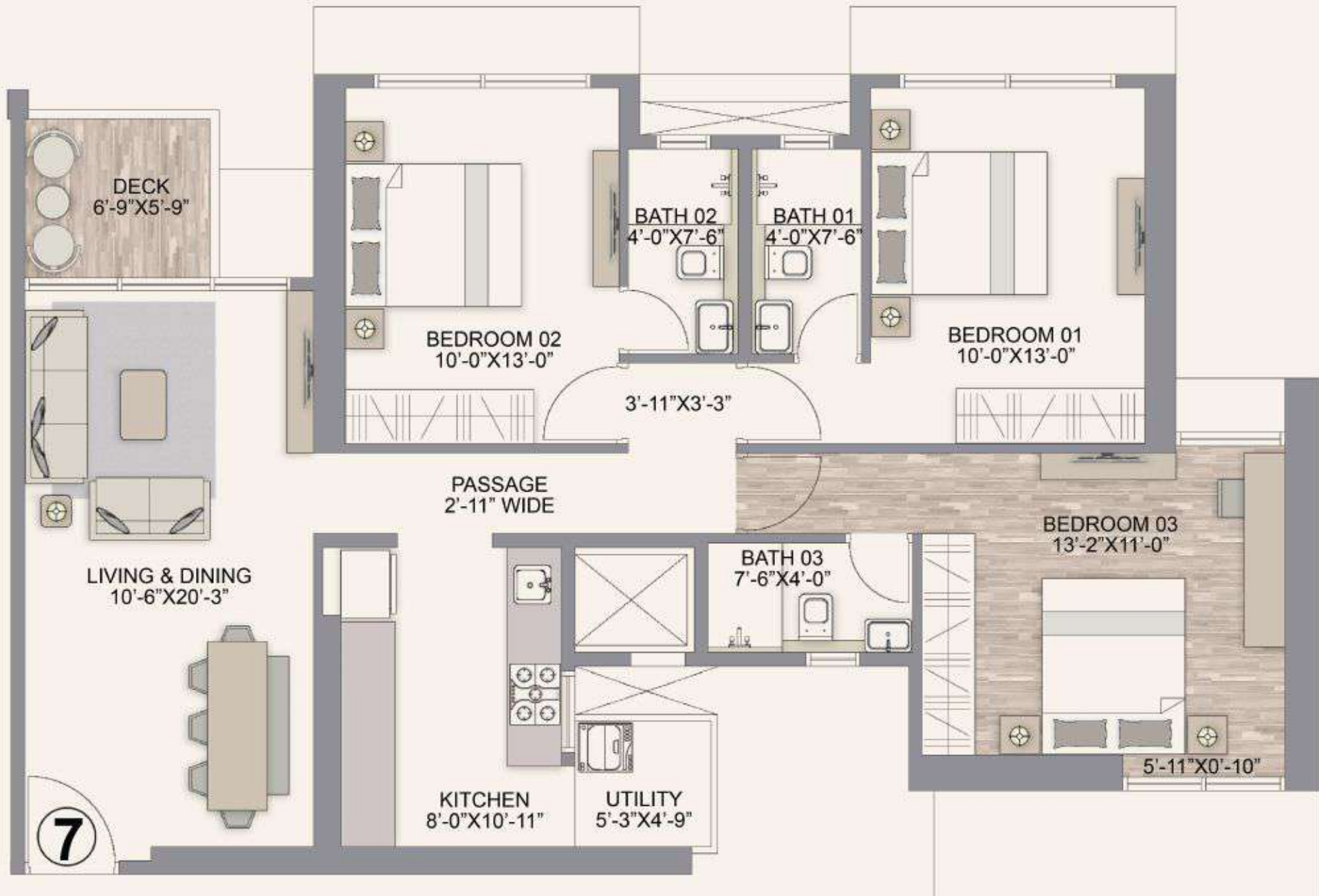
Plan Not To Scale

Chandak Treesourous MahaRERA Project Registration No. P51800048658 Available on <https://maharera.mahaonline.gov.in>

Note - The floor plan layout is in respect of 2nd to 45th habitable floors. The furniture, fixtures, interior work, design options and fittings as displayed in this communication are artistic impressions used for indicative purposes only and not part of the standard offerings to be provided in the premises. The areas and dimensions shown, if any, are as per the plans approved by the concerned authority and the same are subject to construction exigencies and variations. Intending purchasers are requested to verify all the details before acting in any manner with respect to the project. Project financed by ICICI Bank Limited.

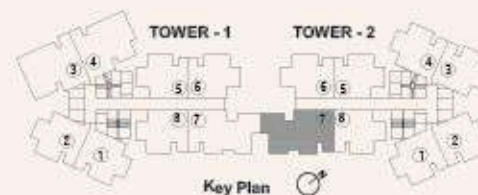


MAHARERA QR CODE



*T&C Applied

3 BHK - 1019 SQ.FT.*



RERA CARPET AREA	ADDITIONAL AREA	TOTAL AREA
SQ.FT	SQ.FT	SQ.FT
955	64	1019



Plan Not To Scale

Chandak Treesourous MahaRERA Project Registration No. P51800048658 Available on <https://maharera.mahaonline.gov.in>

Note - The floor plan layout is in respect of 2nd to 45th habitable floors. The furniture, fixtures, interior work, design options and fittings as displayed in this communication are artistic impressions used for indicative purposes only and not part of the standard offerings to be provided in the premises. The areas and dimensions shown, if any, are as per the plans approved by the concerned authority and the same are subject to construction exigencies and variations. Intending purchasers are requested to verify all the details before acting in any manner with respect to the project. Project financed by ICICI Bank Limited.



MHA/RERA QR CODE