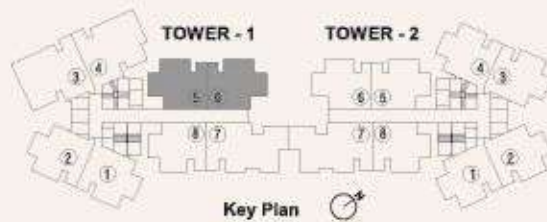
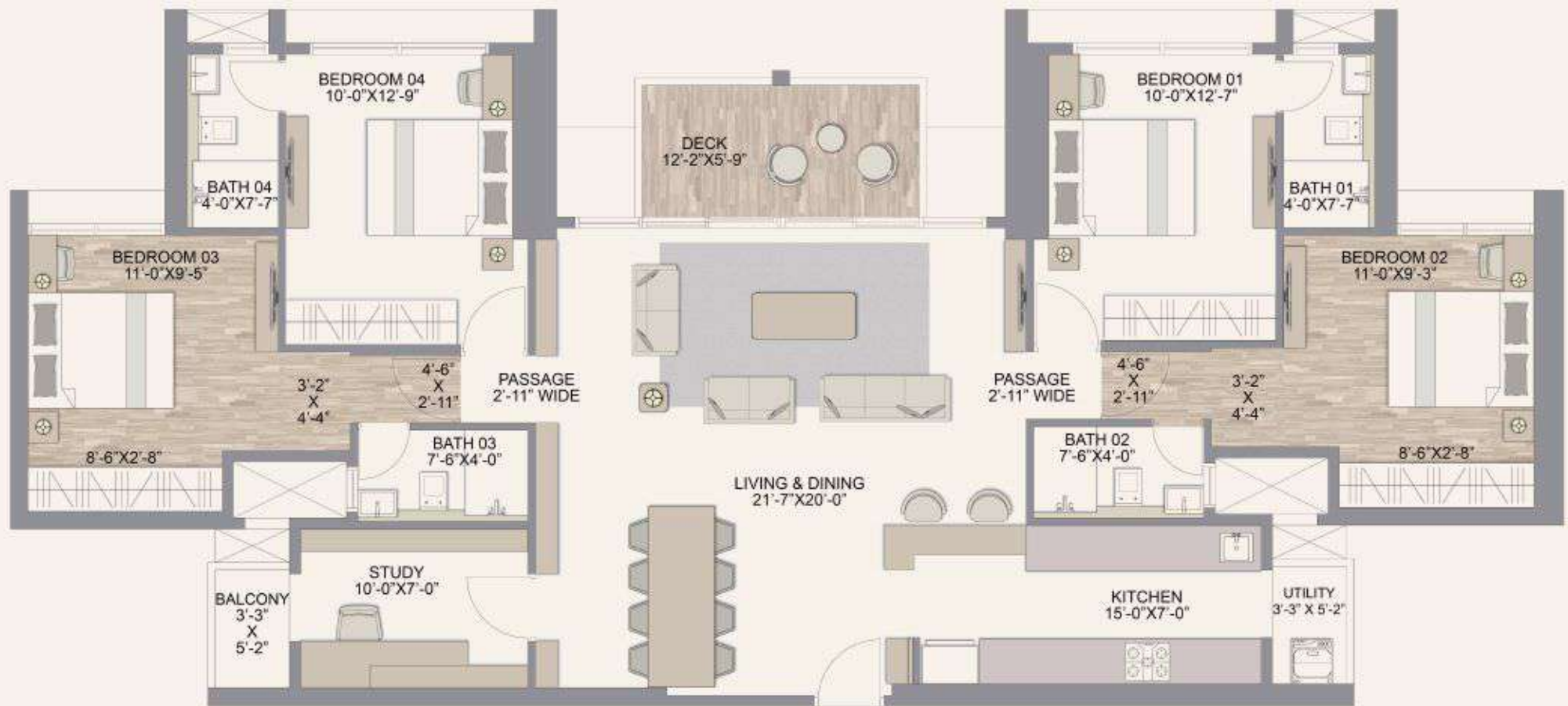


2+2 JODI - 1451 SQ.FT.*

FURNITURE OPTION - 01



RERA CARPET AREA	ADDITIONAL AREA	TOTAL AREA
SQ.FT	SQ.FT	SQ.FT
1348	103	1451



*TSC Applied

Chandak Treesourous MahaRERA Project Registration No. PS1800048658 Available on <https://maharera.mahaonline.gov.in>

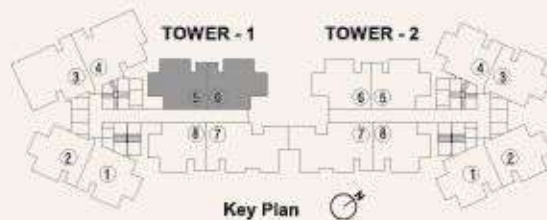
Note - The floor plan layout is in respect of 2nd to 45th habitable floors. The furniture, fixtures, interior work, design options and fittings as displayed in this communication are artistic impressions used for indicative purposes only and not part of the standard offerings to be provided in the premises. The areas and dimensions shown, if any, are as per the plans approved by the concerned authority and the same are subject to construction exigencies and variations. Intending purchasers are requested to verify all the details before acting in any manner with respect to the project. Project financed by ICICI Bank Limited.



MAHARERA QR CODE

2+2 JODI - 1451 SQ.FT.*

FURNITURE OPTION - 02 WITH SWING



RERA CARPET AREA	ADDITIONAL AREA	TOTAL AREA
SQ.FT	SQ.FT	SQ.FT
1348	103	1451



*TSC Applied

Chandak Treesourous MahaRERA Project Registration No. PS1800048658 Available on <https://maharera.mahaonline.gov.in>

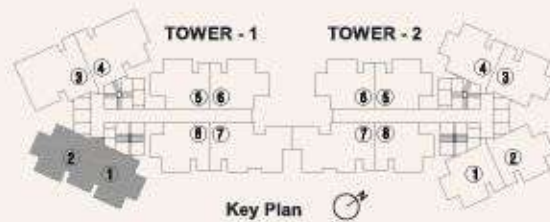
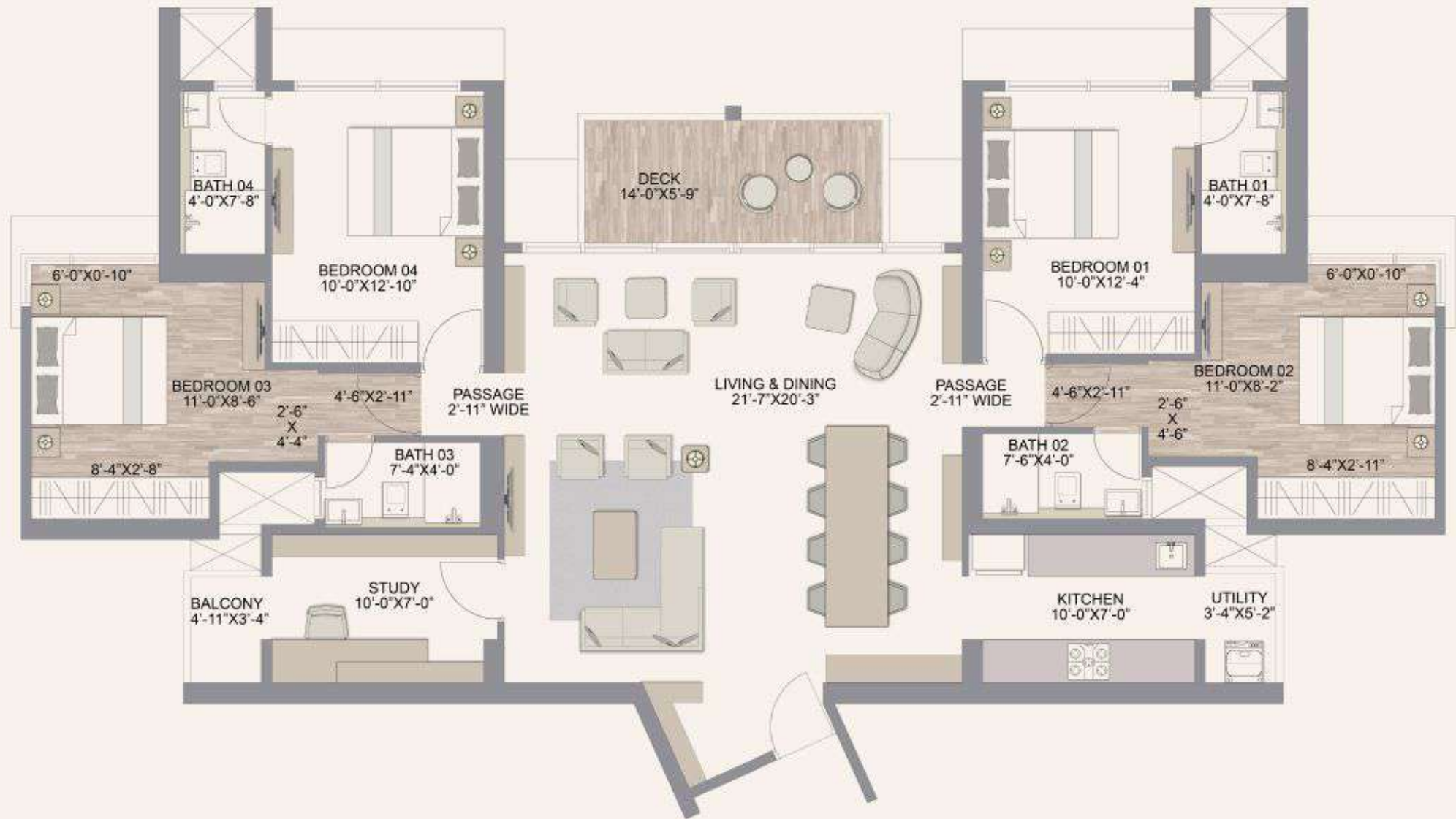
Note - The floor plan layout is in respect of 2nd to 45th habitable floors. The furniture, fixtures, interior work, design options and fittings as displayed in this communication are artistic impressions used for indicative purposes only and not part of the standard offerings to be provided in the premises. The areas and dimensions shown, if any, are as per the plans approved by the concerned authority and the same are subject to construction exigencies and variations. Intending purchasers are requested to verify all the details before acting in any manner with respect to the project. Project financed by ICICI Bank Limited.



MAHARERA QR CODE

2+2 JODI - 1495 SQ.FT.*

FURNITURE OPTION - 01



RERA CARPET AREA	ADDITIONAL AREA	TOTAL AREA
SQ.FT	SQ.FT	SQ.FT
1381	114	1495



Plan Not To Scale

*TSC Applied

Chandak Treesourous MahaRERA Project Registration No. PS1800048658 Available on <https://maharera.mahaonline.gov.in>

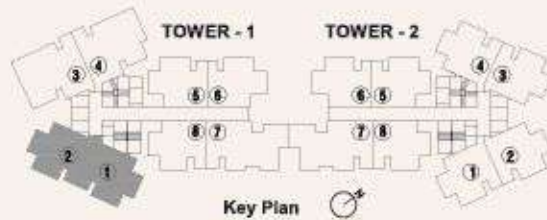
Note - The floor plan layout is in respect of 2nd to 45th habitable floors. The furniture, fixtures, interior work, design options and fittings as displayed in this communication are artistic impressions used for indicative purposes only and not part of the standard offerings to be provided in the premises. The areas and dimensions shown, if any, are as per the plans approved by the concerned authority and the same are subject to construction exigencies and variations. Intending purchasers are requested to verify all the details before acting in any manner with respect to the project. Project financed by ICICI Bank Limited.



MAHARERA QR CODE

2+2 JODI - 1495 SQ.FT.*

FURNITURE OPTION - 02 WITH SWING



RERA CARPET AREA	ADDITIONAL AREA	TOTAL AREA
SQ.FT	SQ.FT	SQ.FT
1381	114	1495



Plan Not To Scale

*TSC Applied

Chandak Treesourous MahaRERA Project Registration No. PS1800048658 Available on <https://maharera.mahaonline.gov.in>

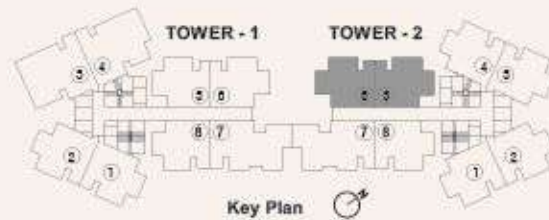
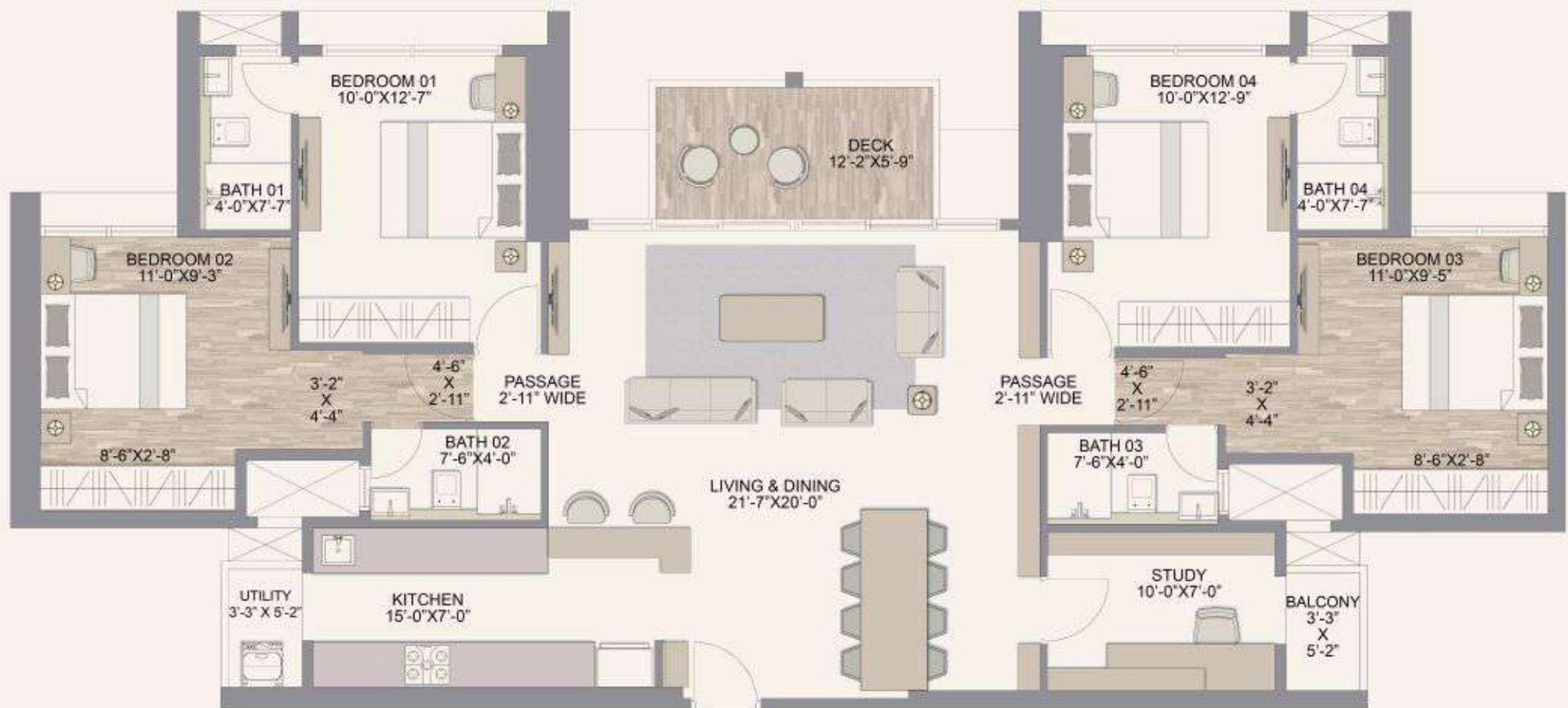
Note - The floor plan layout is in respect of 2nd to 45th habitable floors. The furniture, fixtures, interior work, design options and fittings as displayed in this communication are artistic impressions used for indicative purposes only and not part of the standard offerings to be provided in the premises. The areas and dimensions shown, if any, are as per the plans approved by the concerned authority and the same are subject to construction exigencies and variations. Intending purchasers are requested to verify all the details before acting in any manner with respect to the project. Project financed by ICICI Bank Limited.



MAHARERA QR CODE

2+2 JODI - 1451 SQ.FT.*

FURNITURE OPTION - 01



RERA CARPET AREA	ADDITIONAL AREA	TOTAL AREA
SQ.FT	SQ.FT	SQ.FT
1348	103	1451



Plan Not To Scale

*TSC Applied

Chandak Treesourous MahaRERA Project Registration No. P51800048658 Available on <https://maharera.mahaonline.gov.in>

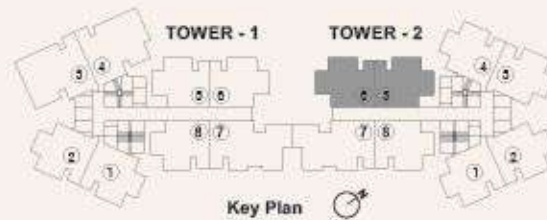
Note - The floor plan layout is in respect of 2nd to 45th habitable floors. The furniture, fixtures, interior work, design options and fittings as displayed in this communication are artistic impressions used for indicative purposes only and not part of the standard offerings to be provided in the premises. The areas and dimensions shown, if any, are as per the plans approved by the concerned authority and the same are subject to construction exigencies and variations. Intending purchasers are requested to verify all the details before acting in any manner with respect to the project. Project financed by ICICI Bank Limited.



MAHARERA QR CODE

2+2 JODI - 1451 SQ.FT.*

FURNITURE OPTION - 02 WITH SWING



RERA CARPET AREA	ADDITIONAL AREA	TOTAL AREA
SQ.FT	SQ.FT	SQ.FT
1348	103	1451



Plan Not To Scale

*T&C Applied

Chandak Treesourous MahaRERA Project Registration No. P51800048658 Available on <https://maharera.mahaonline.gov.in>

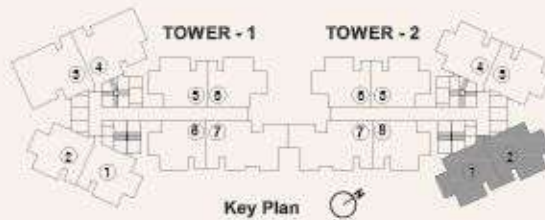
Note - The floor plan layout is in respect of 2nd to 45th habitable floors. The furniture, fixtures, interior work, design options and fittings as displayed in this communication are artistic impressions used for indicative purposes only and not part of the standard offerings to be provided in the premises. The areas and dimensions shown, if any, are as per the plans approved by the concerned authority and the same are subject to construction exigencies and variations. Intending purchasers are requested to verify all the details before acting in any manner with respect to the project. Project financed by ICICI Bank Limited.



MAHARERA QR CODE

2+2 JODI - 1495 SQ.FT.*

FURNITURE OPTION - 01



RERA CARPET AREA	ADDITIONAL AREA	TOTAL AREA
SQ.FT	SQ.FT	SQ.FT
1381	114	1495



*T&C Applied

Chandak Treesourous MahaRERA Project Registration No. P51800048658 Available on <https://maharera.mahaonline.gov.in>

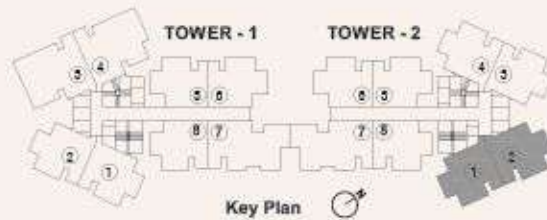
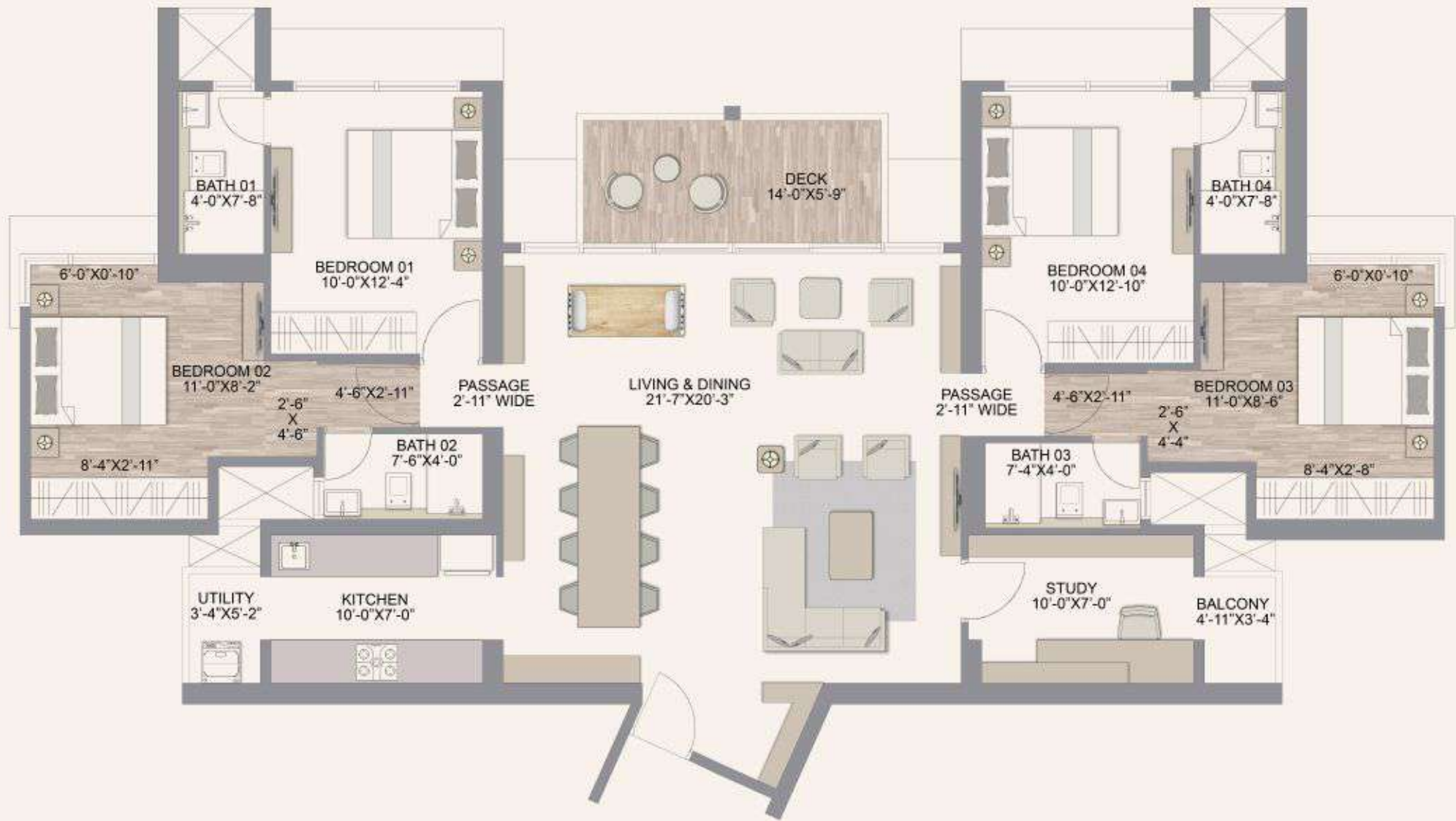
Note - The floor plan layout is in respect of 2nd to 45th habitable floors. The furniture, fixtures, interior work, design options and fittings as displayed in this communication are artistic impressions used for indicative purposes only and not part of the standard offerings to be provided in the premises. The areas and dimensions shown, if any, are as per the plans approved by the concerned authority and the same are subject to construction exigencies and variations. Intending purchasers are requested to verify all the details before acting in any manner with respect to the project. Project financed by ICICI Bank Limited.



Maha RERA QR CODE

2+2 JODI - 1495 SQ.FT.*

FURNITURE OPTION - 02 WITH SWING



RERA CARPET AREA	ADDITIONAL AREA	TOTAL AREA
SQ.FT	SQ.FT	SQ.FT
1381	114	1495



*TSC Applied

Chandak Treesourous MahaRERA Project Registration No. P51800048658 Available on <https://maharera.mahaonline.gov.in>

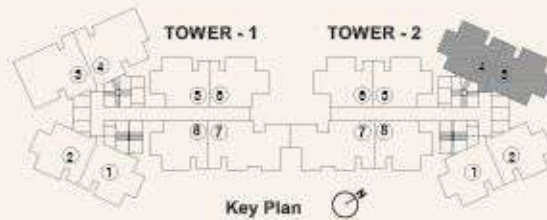
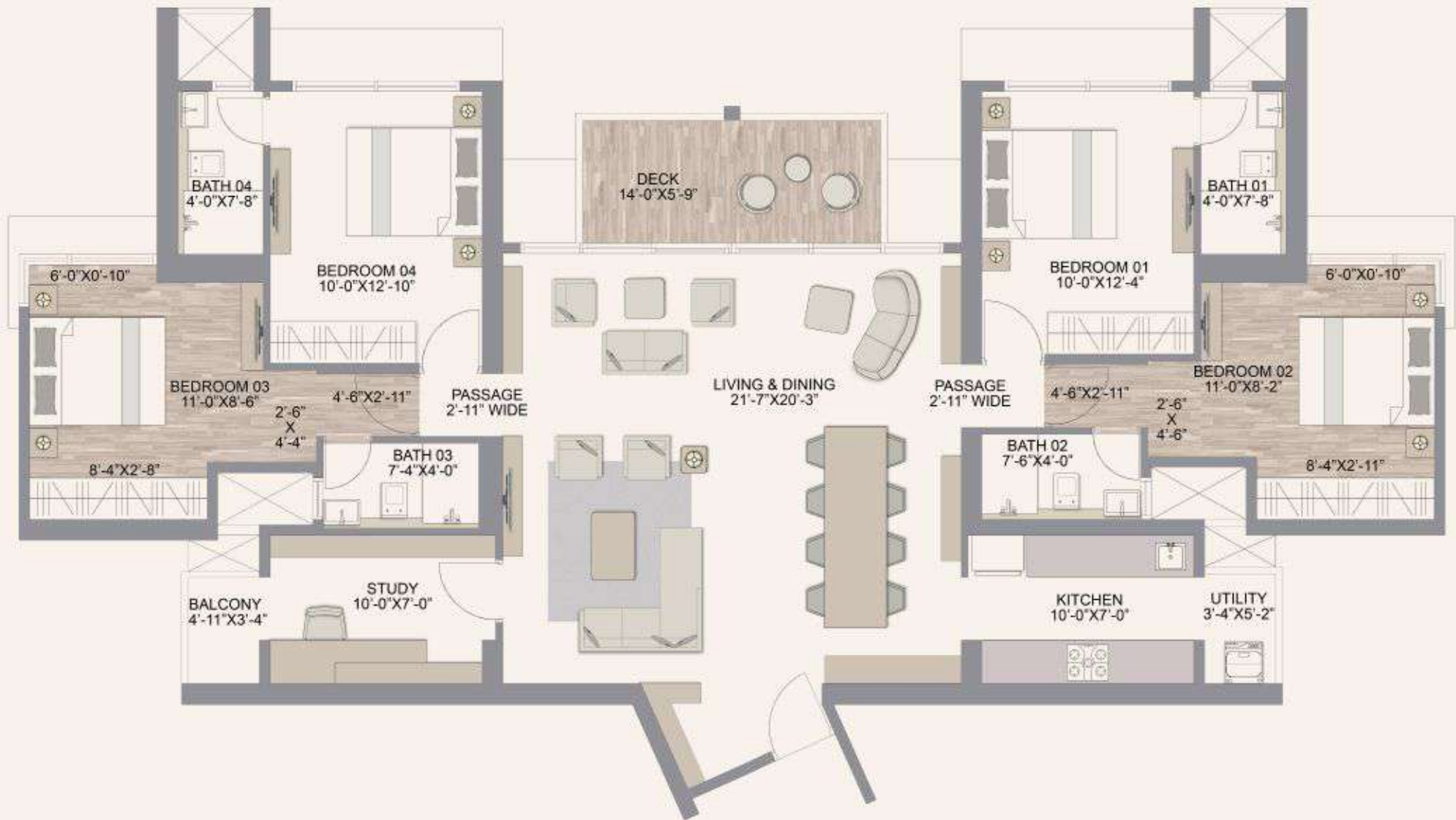
Note - The floor plan layout is in respect of 2nd to 45th habitable floors. The furniture, fixtures, interior work, design options and fittings as displayed in this communication are artistic impressions used for indicative purposes only and not part of the standard offerings to be provided in the premises. The areas and dimensions shown, if any, are as per the plans approved by the concerned authority and the same are subject to construction exigencies and variations. Intending purchasers are requested to verify all the details before acting in any manner with respect to the project. Project financed by ICICI Bank Limited.



MHURDRA QR CODE

2+2 JODI - 1495 SQ.FT.*

FURNITURE OPTION - 03



RERA CARPET AREA	ADDITIONAL AREA	TOTAL AREA
SQ.FT	SQ.FT	SQ.FT
1381	114	1495



Plan Not To Scale

*T&C Applied

Chandak Treesourous MahaRERA Project Registration No. P51800048658 Available on <https://maharera.mahaonline.gov.in>

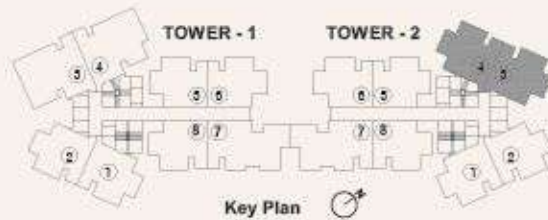
Note - The floor plan layout is in respect of 2nd to 45th habitable floors. The furniture, fixtures, interior work, design options and fittings as displayed in this communication are artistic impressions used for indicative purposes only and not part of the standard offerings to be provided in the premises. The areas and dimensions shown, if any, are as per the plans approved by the concerned authority and the same are subject to construction exigencies and variations. Intending purchasers are requested to verify all the details before acting in any manner with respect to the project. Project financed by ICICI Bank Limited.



MahaRERA QR CODE

2+2 JODI - 1495 SQ.FT.*

FURNITURE OPTION - 04 WITH SWING



RERA CARPET AREA	ADDITIONAL AREA	TOTAL AREA
SQ.FT	SQ.FT	SQ.FT
1381	114	1495



Plan Not To Scale

*T.C. Applied

Chandak Treesourous MahaRERA Project Registration No. P51800048658 Available on <https://maharera.mahaonline.gov.in>

Note - The floor plan layout is in respect of 2nd to 45th habitable floors. The furniture, fixtures, interior work, design options and fittings as displayed in this communication are artistic impressions used for indicative purposes only and not part of the standard offerings to be provided in the premises. The areas and dimensions shown, if any, are as per the plans approved by the concerned authority and the same are subject to construction exigencies and variations. Intending purchasers are requested to verify all the details before acting in any manner with respect to the project. Project financed by ICICI Bank Limited.



MHARERA QR CODE